



TapWatch® is the industry standard fully automated wireless submetering system designed exclusively for the multifamily housing industry. Already installed in over one million apartments nationwide, TapWatch helps you increase your operating income by having residents pay for their own utility usage.

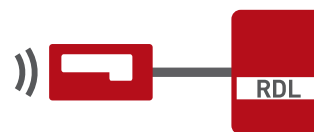
How it Works



A compatible utility meter installed in each unit is connected to an Inovonics battery powered wireless transmitter. The wireless transmitter converts the meter read into a digitized signal for transmission.



Line powered repeaters, placed at strategic locations across the site, receive and verify signals from the wireless transmitters then amplify the signals for re-transmission to the receiver.



The Remote Data Logger (RDL) receives transmissions from the receiver storing the utility consumption data for retrieval by TapWatch software.



Authorized billing companies access the consumption data remotely using IP connectivity (recommended) or high-speed modems with TapWatch software.

Pulse Counting Transmitter

The **EN1501** provides a means for tracking and transmitting utility meter readings. As the meter measures the amount of water, gas, or electricity used, the resulting pulses are counted and transmitted.



Extended Life Pulse Counting Transmitter

The **EN1501-XL** includes all of the functionality of the standard pulse counting transmitter, and adds a high capacity battery that is good for up to 20 years of operation.



Pulse Counting Transmitter Board

The **EN1501-EXT** pulse counting transmitter is a board-only transmitter with external header pins. It is designed for integration into a customer designed meter or product.



High Power Repeater

The high power repeater amplifies transmissions from any transmitter. Multiple repeaters can be used to provide campus wide coverage.

High Power Repeater with Transformer **EN5040-T**

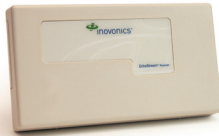
Without Transformer **EN5040**

Weatherproof Enclosure **ACC640**



Serial Receiver

The **EN4000** receives messages from the pulse counting transmitters and transfers them to the remote data logger.



IP Remote Data Logger

The **RDL8500-IP** accepts and stores utility consumption data from up to 2000 transmitters for 90 days. Authorized billing companies connect to the RDL through TapWatch 3 to retrieve utility readings along with site information and system notices.

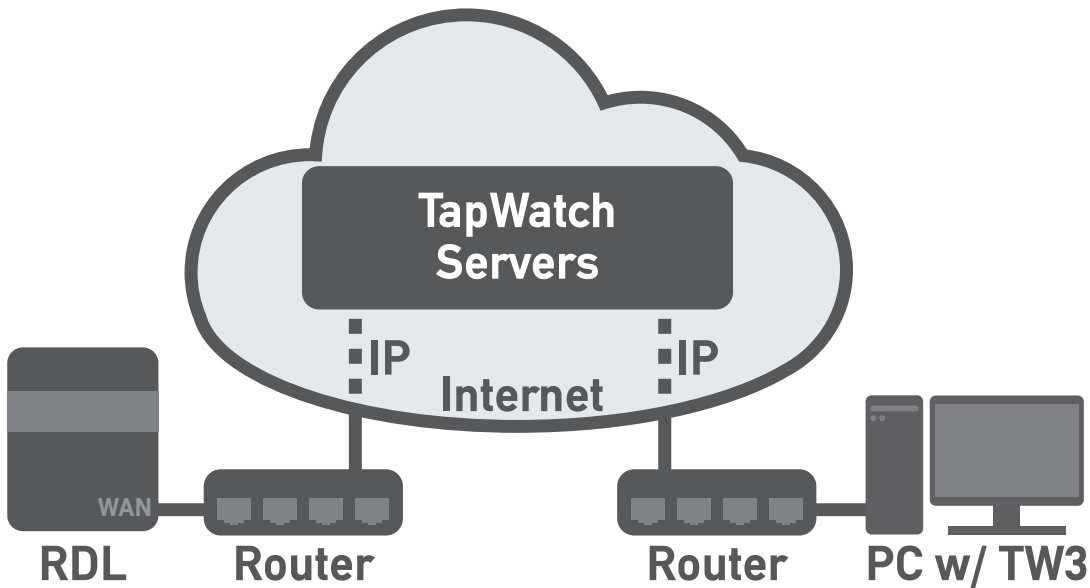


TapWatch 3 Software

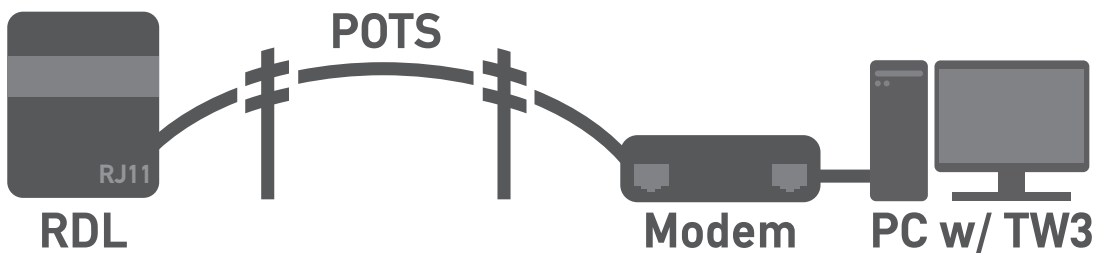
TapWatch 3 is the software link between billing and the RDL. Billing connects to the RDL through TapWatch 3 to retrieve utility readings along with site information and system notices.



IP Connectivity (Recommended)



Public Switched Telephone Network (PSTN) Connectivity



The range and performance of any wireless product depends on the structure and environment in which it operates. Continual enhancements to our products may cause specifications to change without notice. Visit our website for UL information.

Phone: 303.939.9336 • Toll-Free: 800.782.2709 • Fax: 303.939.8977 • E-Mail: sales@inovonics.com

www.inovonics.com

ISO 9001
CERTIFIED
COMPANY

10.8.15 PG0023K