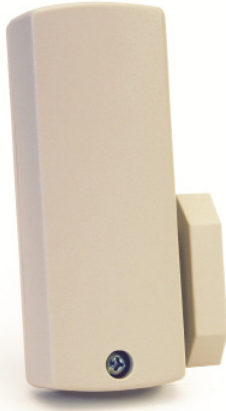


EN1215WEOL Door/Window Transmitter with Wall Tamper, Reed Switch and EOL Protection


The Inovonics door/window transmitter with wall tamper, reed switch and EOL protection has a built-in magnetic reed switch on the side with a magnet that supports a 5/8" gap. A 2.2K ohm end of line resistor is included, and is required to operate it. The transmitter includes a wall tamper switch that notifies the system when the transmitter is removed from its mounted surface.

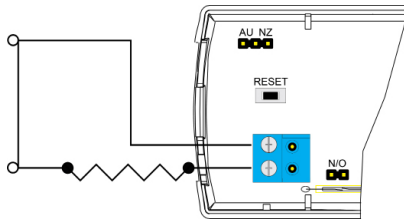
Product Features

End-of-line resistor supervision
Can be used with almost any standard NO/NC contact
UL listed

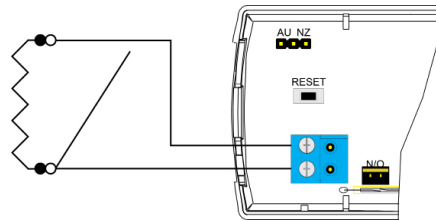
Product Specifications

Weight:	3 oz
Typical battery life:	3 – 5 years
Internal battery type:	Panasonic CR123A
External contacts:	Normally open or normally closed
External contact cabling requirements:	14 - 22 gauge wire, unshielded, 10 foot maximum length
Distance, external contact to transmitter:	10 feet maximum
Distance, magnet to internal contact magnetic reed switch:	5/8"
Operating environment:	
Temperature:	32 to 140°F; 32 to 120°F for UL installations
Humidity:	Up to 90% (non-condensing)
Market:	North America, Australia, New Zealand
EchoStream® frequency:	902-928 MHz, frequency hopping spread spectrum
Check-in time frequency:	3 minutes
Regulatory compliance:	FCC, RoHS, Industry Canada, UL listed

Inputs

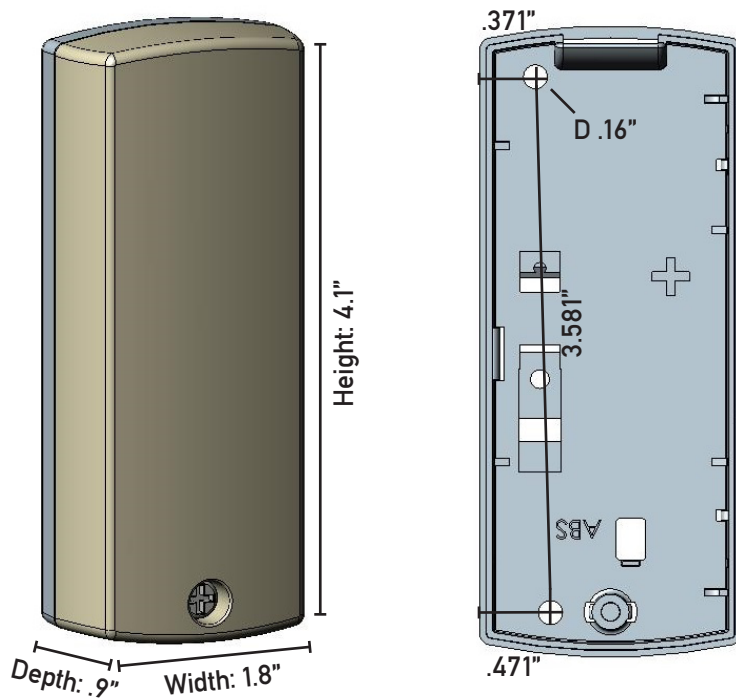


Normally closed



Normally open

Dimensions



Reference Materials (available at www.inovonics.com)

EN1215WEOL Universal Transmitter with Wall Tamper, Reed Switch and EOL Protection
Installation Instructions

EchoStream Developer Guide

Inovonics Product Catalog: North America

- The range and performance of any wireless product depends on the structure and environment in which it operates.
- Continual enhancements to our products may cause specifications to change without notice.
- Patents: 7,154,866; 7,554,932; 7,746,804; others pending.

Technical documents

For technical documents visit us at <http://www.inovonics.com/support/tech-documents/> or use the QR code below.

